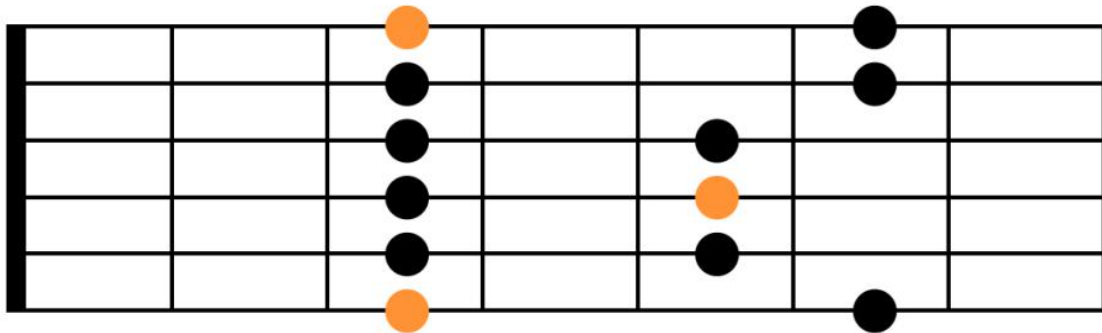


# Toutes les positions de la gamme pentatonique mineure

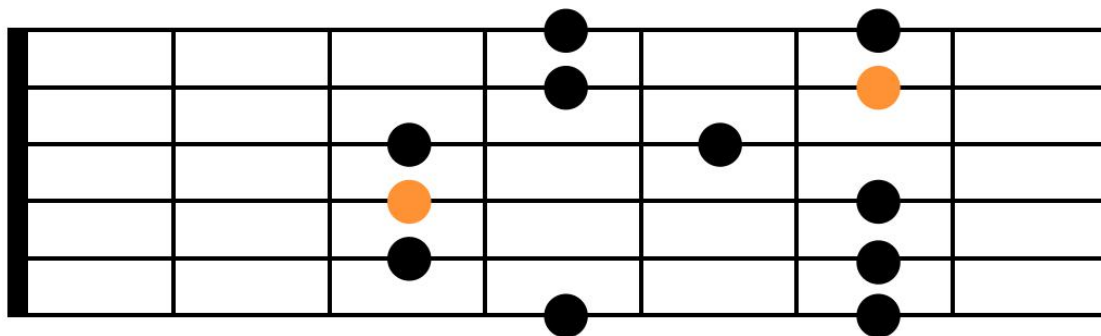
Les gammes pentatoniques sont présentées en Sol en partant de la case 3

## Position 1 en partant de la tonique :



T  
A  
B

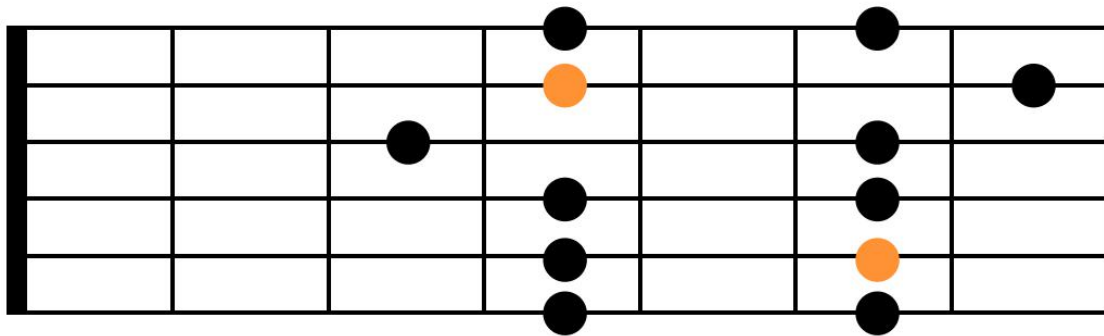
## Position 2 en partant de la tierce :



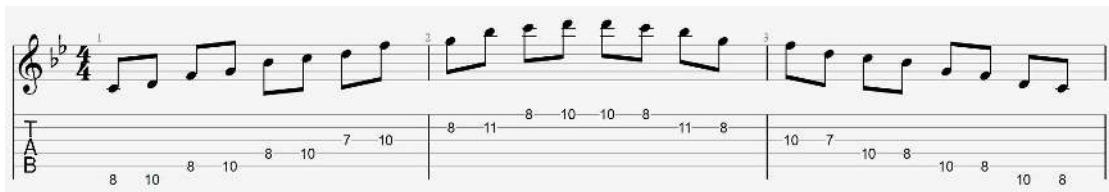
case 6

T  
A  
B

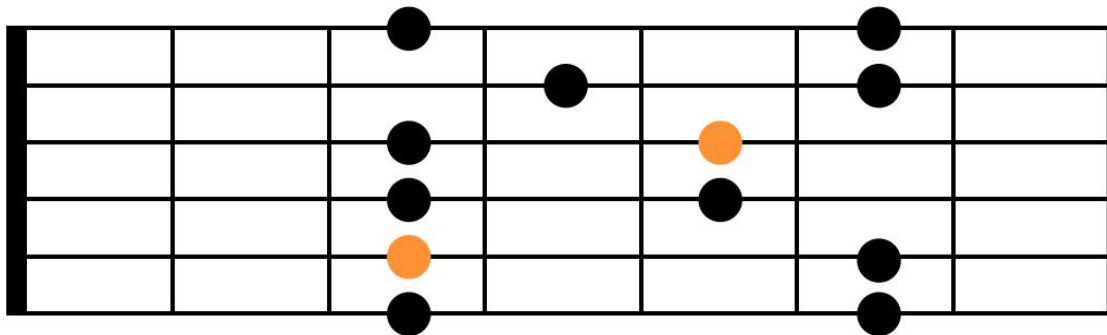
### Position 3 en partant de la quarte :



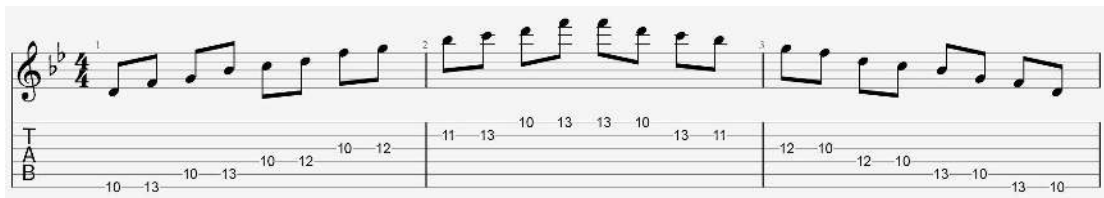
case 8



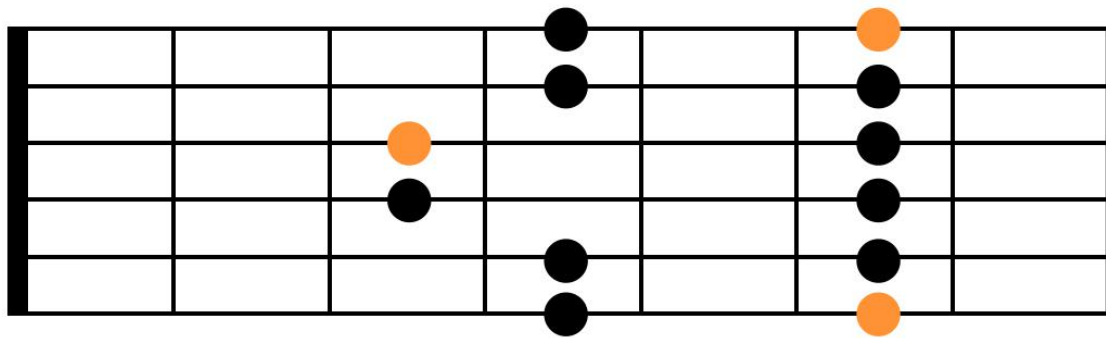
### Position 4 en partant de la quinte :



case 10



## Position 5 en partant de la septième :



case 13

## Extension de la pentatonique :

